

TENZI
ProDetailing



www.tenziprodetailing.com

DEEP CLEANING OF CAR BODY

A set of specialized products dedicated for specific surfaces or soiling that can not be removed through traditional methods of manual washing with standard neutral or alkaline agents

PRIX

READY TO USE RIMS AND CAR PAINT DEIRONIZING



Agent for dissolving metallic dirt, such as dust from brake pads or volatile, airborne rust particles. Has a visual „Bleeding.“ effect. Thanks to the neutral pH it is safe to be used on aluminum (also polished) chromed rims and elements, as well as on the car paint.

700 ML - DP015B700
5 L - DP015A005

SAFETY:	=====
EFFICIENCY:	=====
EASE OF APPLICATION:	=====
QUICKNESS:	=====

PUNKT

READY TO USE REMOVAL OF TAR AND GLUE MARKS



Ready to use cleaning agent based on alcohol and natural solvents. Removes traces of asphalt, tar, markers, ink, chewing gum, glue, shoe polish, paraffin, rubber and some spray paints. Leaves an intense, fresh orange fragrance.

700 ML - DP034B700

EFFICIENCY:	=====
EASE OF APPLICATION:	=====
QUICKNESS:	=====
FRAGRANCE:	=====

CAR BODY WASHING

Car body washing is the basic and the most common car care operation. The range consists of alkaline products for deep cleaning dedicated for difficult to remove dirt as well as maintenance products that are chemically neutral and safe for the previously applied coatings

APC OUT

CONCENTRATE UNIVERSAL PRE-WASH



Extremely effective product for the pre-washing of the car body. It dissolves stubborn petroleum derived dirt. Particularly effective for cleaning of the lower parts of the car body (below the window line), rims and tyres.

700 ML - DP014B700
5 L - DP014A005

SAFETY:	=====
POWER:	=====
EFFICIENCY:	=====
EASE OF APPLICATION:	=====
CLEANING:	=====

QUARTZ SHAMPOO

CONCENTRATE SIMULTANEOUS WASHING AND COATING



A revolutionary shampoo for protecting the car body with a quartz coating applied through manual washing. Its nano formula brings out the color depth and shine of the lacquer, protects it from deposition of dirt and UV rays and creates an effective hydrophobic coating.

700 ML - DP025B700
5 L - DP025A005

SAFETY:	=====
HYDROPHOBICITY:	=====
DURABILITY:	=====
EASE OF APPLICATION:	=====
COLOR ENHANCEMENT:	=====
GLOSS:	=====

CLAY SPRAY

READY TO USE PERFECT CLAY LUBRICANT

Efficient, highly effective and convenient to use lubricant for clay bars, which facilitates the removal of dirt from the car body. It protects the car paint against accidental scratches. The product is safe for surfaces made of plastic and vinyl or that are lacquered or chromed.



700 ML - DP024B700

EFFICIENCY:	=====
EASE OF APPLICATION:	=====
QUICKNESS:	=====
FRAGRANCE:	=====

IPA CLEANER

READY TO USE UNIVERSAL DEGREASER

Alcohol based agent for degreasing the car body before the application of protective coatings. Removes greasy marks and dust which gathers on the car after it has been washed and dried.



700 ML - DP023B700
5 L - DP023A005

EFFICIENCY:	=====
EASE OF APPLICATION:	=====
QUICKNESS:	=====
SAFETY:	=====

FOAM PINK/WHITE

CONCENTRATE ACTIVE FOAM PH7

Highly concentrated, rich and thick foam for manual washing of the car body. Thanks to its natural pH and fully biodegradable ingredients it is safe for the paintwork and all types of coatings.



FOAM WHITE

700 ML - DP012B700
5 L - DP012A005

FOAM PINK

700 ML - DP013B700
5 L - DP013A005

SAFETY:	=====
EFFICIENCY:	=====
EASE OF APPLICATION:	=====
POWER:	=====
FRAGRANCE:	=====
HYDROPHILICITY:	=====

CAR SHINE

READY TO USE RESTORING PAINT GLOSS

Extremely easy and quick to use glossing agent for all types of car bodies. Effectively removes fresh hard water stains, giving an instant gloss and emphasizing colour depth of the car paint.



700 ML - DP003B700

SAFETY:	=====
EFFICIENCY:	=====
EASE OF APPLICATION:	=====
QUICKNESS:	=====
FRAGRANCE:	=====

INTERIOR CLEANING

Cleaning and daily care of the car's interior completes the detailing process. Due to various surface types, products with a wide range of applications, as well as those that will restore the surface's original condition without changing it, are required

APC IN

CONCENTRATE/READY TO USE ALL-PURPOSE
DEEP CLEANER



Multi-purpose product with a fresh fragrance for cleaning and washing of heavily soiled surfaces and elements within the car's interior.

GT

700 ML - DP0018700

CONCENTRATE

700 ML - DP0028700
5 L - DP002A005

- SAFETY: ██████████
- EFFICIENCY: ██████████
- QUICKNESS: ██████████
- FRAGRANCE: ██████████

COCKPIT CARE

READY TO USE REGULAR
DASHBOARD MAINTENANCE



Simple to use, anti-static product for regular dashboard maintenance and care without a glossy effect. Leaves a pleasant fragrance and hinders dust deposition.

700 ML - DP0228700

- SAFETY: ██████████
- EFFICIENCY: ██████████
- EASE OF APPLICATION: ██████████
- FRAGRANCE: ██████████

GLASS CLEANER

READY TO USE CLEANING
OF GLASS SURFACES

Highly efficient and effective cleaner for glass surfaces such as windows (inside and outside) mirrors and spotlights. It evaporates quickly and does not leave stains and streaks. Safe for gaskets and plastics. Does not contain ammonia.



700 ML - DP0168700

- SAFETY: ██████████
- EFFICIENCY: ██████████
- QUICKNESS: ██████████
- FRAGRANCE: ██████████

LEATHER WASHING AND CARE

Leather upholstery has many advantages but it is also very demanding when it comes to maintaining its appearance and functionality at an adequate level. This is why we have a group of products dedicated for leather cleaning, maintenance and conditioning

LEATHER CLEANER

READY TO USE LEATHER
DEEP CLEANING



Ready to use, highly effective cleaning agent for leather surfaces. It easily dissolves old dirt that has penetrated deeply into the leather. The product primes the surface for further proofing and care

700 ML - DP0198700

- EFFICIENCY: ██████████
- EASE OF APPLICATION: ██████████
- QUICKNESS: ██████████
- SAFETY: ██████████

LEATHER WASH & CARE

READY TO USE REGULAR
CLEANING AND CARE



Convenient product for daily care of artificial and natural leather surfaces. It dissolves the soiling leaving a delicate protective layer on the leather surface.

700 ML - DP0218700

- EFFICIENCY: ██████████
- EASE OF APPLICATION: ██████████
- QUICKNESS: ██████████
- SAFETY: ██████████
- FRAGRANCE: ██████████

LEATHER CONDITIONER

READY TO USE LEATHER
PROOFING AND CONDITIONING

Professional proofing and conditioning product that protects the leather from UV rays and cracking as well as against penetration of water and dirt. Restores natural look and flexibility without shine.



700 ML - DP0208700

- EFFICIENCY: ██████████
- EASE OF APPLICATION: ██████████
- QUICKNESS: ██████████
- SAFETY: ██████████
- DURABILITY: ██████████

CERAMIC COATINGS

Long-lasting ceramic coatings are the most technologically advanced group of products. They are dedicated for various types of surfaces: paint, glass and rims. Appropriate conditions are required for their application: a heated workshop (temperature of 18-24°C), air humidity of maximum 60% and the appropriate during time

Q7 CRYSTAL

READY TO USE CERAMIC PAINT PROTECTION



Permanent quartz-ceramic coating which has been successfully used on thousands of cars globally. Its nano molecules create a remarkably durable, highly hydrophobic, crystalline coating with high gloss.

50 ML - DPO28B050
250 ML - DPO28B250

HYDROPHOBICITY:	██████████
COLOR ENHANCEMENT:	██████████
DURABILITY:	██████████
SLIPPERINESS:	██████████
GLOSS:	██████████
HARDNESS:	██████████

Q10 FLEXI

READY TO USE ADVANCED CERAMIC PAINT PROTECTION



Advanced and unique quartz-ceramic coating formula which combines durable protection, flexibility and high hydrophobicity with a spectacular appearance.

50 ML - DPO29B050
250 ML - DPO29B250

HYDROPHOBICITY:	██████████
COLOR ENHANCEMENT:	██████████
DURABILITY:	██████████
SLIPPERINESS:	██████████
GLOSS:	██████████
HARDNESS:	██████████

GX GLASS

READY TO USE CERAMIC GLASS PROTECTION



Nanoceramic coating which provides a long-term protection, exceptional clarity and strong hydrophobic effect for glass, windows, mirrors and sunroofs. Incredibly easy to apply.

50 ML - DPO31B050

HYDROPHOBICITY:	██████████
DURABILITY:	██████████
SLIPPERINESS:	██████████
CLARITY:	██████████
HARDNESS:	██████████

R1 RIM

READY TO USE CERAMIC RIM PROTECTION



Very efficient coating dedicated for protecting aluminum, chromed or painted rims. Gives a great hydrophobic effect while protecting the rims against dirt, salt, scratches and UV rays.

50 ML - DPO30B050
250 ML - DPO30B250

HYDROPHOBICITY:	██████████
DURABILITY:	██████████
SLIPPERINESS:	██████████
GLOSS:	██████████
HARDNESS:	██████████

T1 TITANIUM

READY TO USE TITANIUM-CERAMIC PAINT PROTECTION

Innovative paint protection system with the durability reinforced by the presence of robust titanium particles. We have maximized their properties through the addition of a coating activator - primer, which improves coating's characteristics.



2 X 50 ML - DPO32B050

HYDROPHOBICITY:	██████████
COLOR ENHANCEMENT:	██████████
DURABILITY:	██████████
SLIPPERINESS:	██████████
GLOSS:	██████████
HARDNESS:	██████████



CERAMIC COATING RE-LOADERS

Ceramic coatings with a durability of up to 1 year may function as standalone coatings or as a supplement to existing protective coatings. These products have the consistency of a lotion or a liquid. Their application is usually not demanding and fairly quick

RLS

READY TO USE LIQUID QUARTZ RELOADER



Technologically advanced liquid product for renewal of quartz ceramic coatings. Provides immediate effect of high hydrophobicity and slipperiness. May also be used for glass surfaces.

700 ML - DP0058700

HYDROPHOBICITY:	=====
DURABILITY:	=====
SLIPPERINESS:	=====
EASE OF APPLICATION:	=====

SLS

READY TO USE CREAM - QUARTZ RELOADER



An innovative product in the form of a cream for finishing of the quartz ceramic coatings. The product creates an additional layer on the car body protected with a quartz coating. It boosts hydrophobicity and slipperiness.

700 ML - DP0048700

HYDROPHOBICITY:	=====
DURABILITY:	=====
SLIPPERINESS:	=====
EASE OF APPLICATION:	=====

P14Si

CONCENTRATE/READY TO USE QUICK QUARTZ PROTECTION

A product based on liquid quartz for protection of car paint, glass, rubber, plastic and metal elements. It has high hydrophobic and glossing properties. Incredibly user-friendly in application.



P14Si KONCENTRAT

700 ML - DP0068700

P14Si GT

700 ML - DP0078700

HYDROPHOBICITY:	=====
DURABILITY:	=====
SLIPPERINESS:	=====
EASE OF APPLICATION:	=====

PC-1

READY TO USE UNIVERSAL CERAMIC WAX

Protective coating in the form of a lotion based on quartz particles and PTFE with additional carnauba wax. Perfectly repels water, provides a great shine, deepens the paint color and gives months of protection against weather conditions and the deposition of dirt.



700 ML - DP0268700

HYDROPHOBICITY:	=====
DURABILITY:	=====
SLIPPERINESS:	=====
EASE OF APPLICATION:	=====

NATURAL WAX PROTECTION

Carnauba wax is the hardest natural wax and therefore it is used as a base of many protective coatings for the car body. Properties of such coatings, especially their durability, ease of application and polishing depend on the carnauba wax content in them

CARNAUBA 33

READY TO USE 33% OF NATURAL CARNAUBA WAX



Durable protective lotion which contains 33% of pure natural carnauba wax. Recommended as a base layer for Carnauba Care or Carnauba Shine because of good micro scratch filling properties.

700 ML - DP0108700

HYDROPHOBICITY:	=====
DURABILITY:	=====
EASE OF APPLICATION:	=====
COLOR ENHANCEMENT:	=====
GLOSS:	=====

CARNAUBA 66

READY TO USE 66% OF NATURAL CARNAUBA WAX



The thickest and the most durable product based on 66% of natural carnauba wax. Recommended as a base layer for Carnauba Care or Carnauba Shine because great micro scratch filling properties

700 ML - DP0118700

HYDROPHOBICITY:	=====
DURABILITY:	=====
EASE OF APPLICATION:	=====
COLOR ENHANCEMENT:	=====
GLOSS:	=====

CARNAUBA CARE

READY TO USE LIGHT NATURAL WAX

A delicate product in the form of a lotion based on Carnauba wax. Creates a primary protective layer, limiting the impact of atmospheric factors on the condition of the paintwork. Slightly deepens the color depth and increases shine.



700 ML - DP0088700

HYDROPHOBICITY:	=====
DURABILITY:	=====
EASE OF APPLICATION:	=====
COLOR ENHANCEMENT:	=====
GLOSS:	=====

CARNAUBA SHINE

READY TO USE WOSK NATURALNY Z POLYSKIEM

A Unique combination of natural carnauba wax and PTFE which allows to achieve a right level of protection and gloss which brings out the carbody's color depth. Efficiently fills micro-scratches, smoothing the paint surface.



700 ML - DP0098700

HYDROPHOBICITY:	=====
DURABILITY:	=====
EASE OF APPLICATION:	=====
COLOR ENHANCEMENT:	=====
GLOSS:	=====

CONDITIONING AND PROOFING

Car body paint is not the only surface that can be protected against the influence of atmospheric conditions, wear and tear or damage. This also applies to surfaces with a certain degree of absorbency and flexibility. Products in this group work perfectly as they are based on nanotechnology

PR

READY TO USE PROTECTION OF PLASTIC AND RUBBER



Innovative product for proofing and maintenance of surfaces made of plastic and rubber. Creates a flexible hydrophobic coating, hindering dirt deposition and restoring the original colour of the material.

700 ML - DP0178700

HYDROPHOBICITY:	██████████
DURABILITY:	██████████
COLOR ENHANCEMENT:	██████████
EASE OF APPLICATION:	██████████

CABRIO PROTECTOR

READY TO USE TEXTILE SURFACE PROTECTION



A specialist product for textile proofing - especially canvas convertible roofs. Thanks to the use of nanotechnology, the product provides a long-term protection against fading, moisture, dirt adhesion and weather conditions.

700 ML - DP0188700

HYDROPHOBICITY:	██████████
DURABILITY:	██████████
COLOR ENHANCEMENT:	██████████
EASE OF APPLICATION:	██████████

MOTORPLAST

READY TO USE ENGINE BAY PROTECTION



A specialist product for protection of metal and plastic elements within the engine bay. Creates a hydrophobic coating which repels dirt and water. May be used on dry and wet surfaces - all depending on your needs. Resistant to high temperatures of up to 250°C

700 ML - DP0358700

HYDROPHOBICITY:	██████████
SAFETY:	██████████
EASE OF APPLICATION:	██████████
COLOR ENHANCEMENT:	██████████



ACCESSORIES

The effectiveness of the use of car cosmetics also depends on the method and conditions of their application. Accessories, that you can find in our offer, are perfectly compatible with our products and ensure the ease of use and the best results

MICROFIBER 400 GSM

TS0002



A high-quality microfiber cloth made by a Danish manufacturer that consists of a blend of very thin polyester (70%) and polyamide (30%) fibers. It ensures effective cleaning of any surface. Indispensable during manual polishing as it eliminates the risk of scratching the paint. When used dry, it attracts dust perfectly. When wet, it easily absorbs water and dirt. After rinsing with water, it is immediately ready for subsequent use. Size: 38 x 38 cm. Weight: 400 g

MICROFIBER 250 GSM

TS0001

A high-quality microfiber cloth made by a Danish manufacturer that consists of a blend of very thin polyester (70%) and polyamide (30%) fibers. It ensures effective cleaning of any surface. Indispensable during manual polishing as it eliminates the risk of scratching the paint. When used dry, it attracts dust perfectly. When wet, it easily absorbs water and dirt. After rinsing with water, it is immediately ready for subsequent use. Size: 38 x 38 cm. Weight: 250g



CLAY BAR 100 G

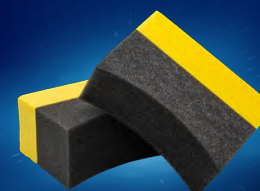
TG0002

High-quality, efficient clay bar for decontamination of car paint from invisible impurities that were not removed during traditional washing. Removes heavy dirt adhering to the car body such as: grease, dirt, brake dust, tar, and mineral dirt. To be used together with Clay Spray. Weight: 100g

DUAL FUNCTION APPLICATOR

TZ0003

A dual function applicator for manual polishing and application of waxes. Yellow side - hard, intended for polishing. Black side - soft, intended for the application of protective waxes.



TYRE APPLICATOR

TZ0006

Convenient applicator for manual application of agents in the form of a lotion and wax, especially for tires and external plastic elements. A convenient incision half way through the applicator on both sides makes it easy to work with.

WASHING SPONGE

TZ0049

High-quality, soft sponge for washing cars and other surfaces. Perfect for manual car body washing. Thanks to its durability, it is ideal for the car wash business.
Size: 22 cm x 11 cm x 6.5 cm



MERINO WOOL MITT

TZ0001

Professional, hand-sewn, comfortable mitt for washing the car body made from the wool of Australian Merino sheep. Extra soft, does not scratch the paintwork. Thumbless, reusable, always stays soft.



HORSEHAIR BRUSH

TP0004

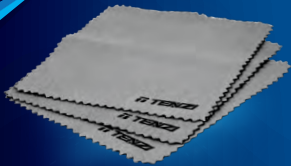
Perfect brush for cleaning leather and textile upholstery or plastic fittings. Soft and thick bristles make it safe for cleaned surfaces, and the profiled wooden handle facilitates precise scrubbing.



SOFT COTTH 10X10 CM

TS0004

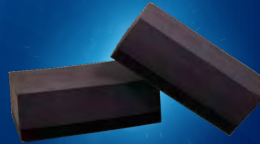
Incredibly soft and handy cloth for use together with the precise applicator. It wraps around it and is perfect for application of liquid quartz-ceramic coatings. It does not scratch the car paint and limits the absorption of the applied product by the applicator, enabling more effective and efficient product distribution on the protected surface.
Size: 10x10 cm



PRECISE APPLICATOR

TZ0055

A Handy two-layer applicator composed of a thin absorbent layer and a foam handle that facilitates the application of products with thick consistency.
Size: 8cm x 4cm x 3cm



DRYING TOWEL 400GSM

TS0003

Very soft and absorbent microfiber towel. It absorbs the water well, does not leave streaks nor stains. Identical structure on both sides ensures effective work, and the edge trim protects the paint against scratches.
Size: 60x90 cm. Weight: 400 g



BRUSH 29 MM

TP0003

Round, wooden, all purpose brush with soft but resilient bristles for convenient distribution of cleaning agents over larger surfaces such as rims or paintwork. Facilitates the effective work of cleaning products.
Diameter 2.9 cm, length: 31 cm



BRUSH 21 MM

TP0002

Round, wooden, all purpose brush with soft but resilient bristles for convenient distribution of cleaning agents over larger surfaces such as rims or paintwork. Facilitates the effective work of cleaning products.
Diameter: 2.1cm, length: 29 cm



BRUSH 15 MM

TP0001

Round, wooden, all purpose brush with soft but resilient bristles for effective cleaning of narrow, hard-to-reach places. Facilitates the effective work of cleaning products.
Diameter 1.5 cm, length: 27 cm

